



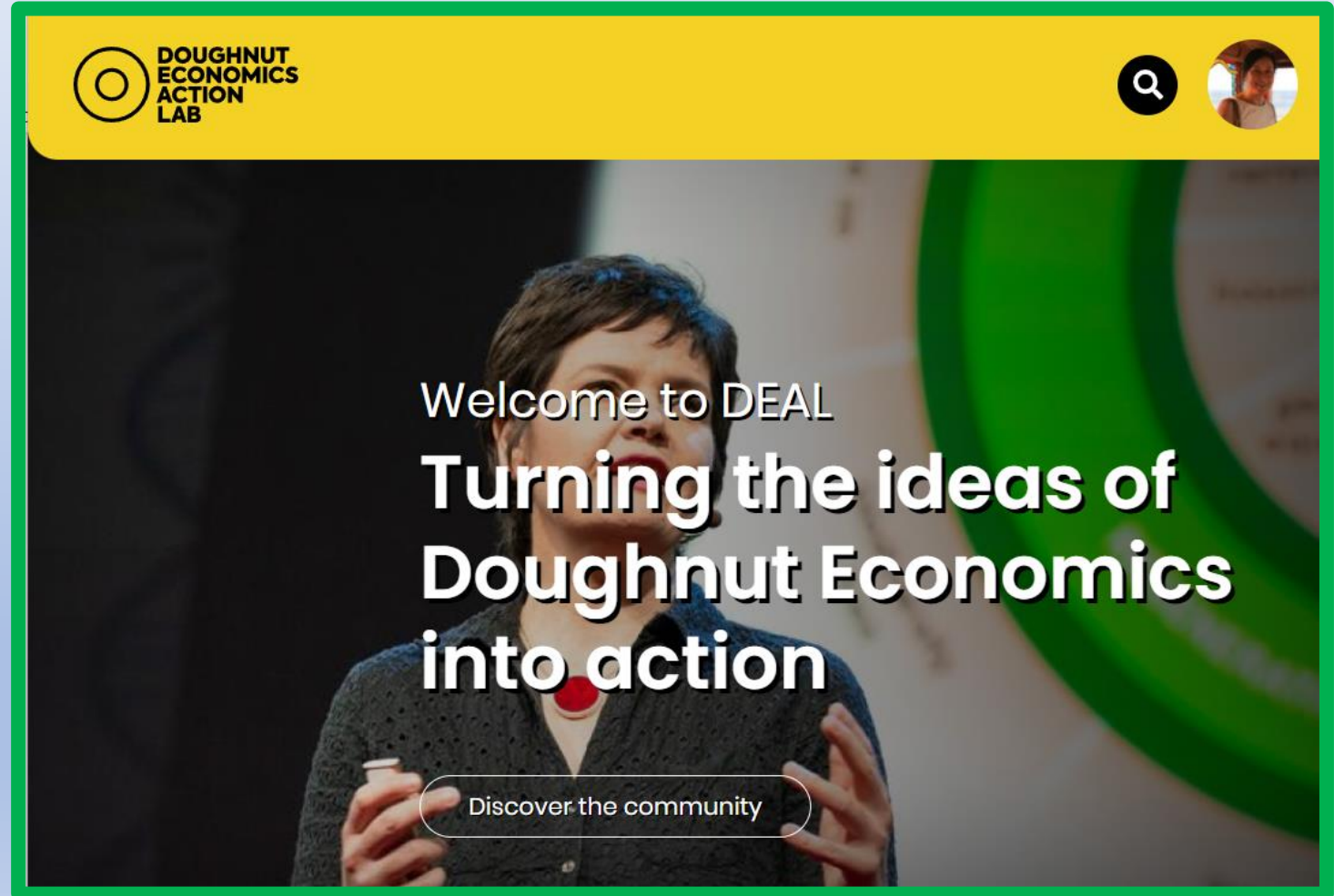
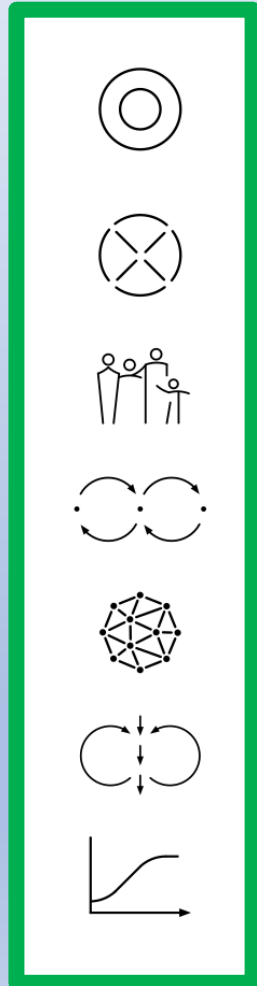
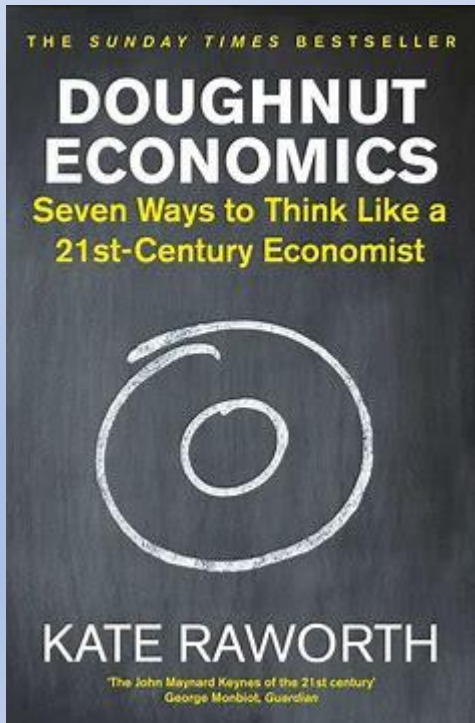
COMMUNITY CONNECT ACTION

Borodoughnut@gmail.com



Middlesbrough
Community
Action NOW

BORO Doughnut and Doughnut Economics





COMMUNITY CONNECT ACTION



[DEAL \(doughnuteconomics.org\)](https://doughnuteconomics.org)



DEAL Community ▾ News Events Tools & Stories ▾ Themes ▾ About ▾

Search...



11

Alianza Dónut España

Spain



29

Amsterdam Donut Coalition

Amsterdam, Noord-Holland, The Netherl...



3

Boro Doughnut

Middlesbrough, England, United Kingdom



24

California Doughnut Economics Coalition...

California



8

Cambridge Doughnut



9

Climate Action Leeds



13

Copenhagen Doughnut /



3

Cornwall Doughnut



COMMUNITY CONNECT ACTION

BORO Doughnut C.I.C. Mission

To build a Thriving Middlesbrough through community action and collaboration using the Doughnut Economics model.

Connect people together to take urgent action for a ‘Thriving Middlesbrough’

– To meet the needs of ALL people within the means of the living planet

ANYONE,
ANY SKILL,
ANY EXPERIENCE

Let's do it!

WE ALL HAVE SOMETHING
TO SHARE TO MAKE
MIDDLESBROUGH
A THRIVING PLACE

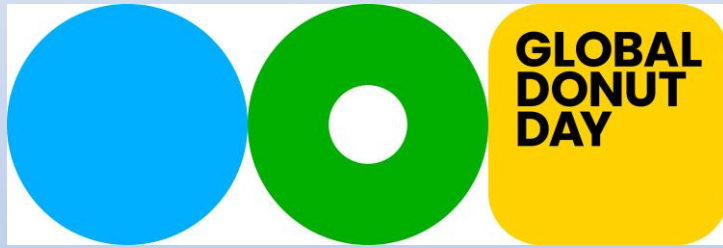
Doughnut through 4 lenses

Ecological Ceiling		
	Local	Global
Ecological	What would it mean for Middlesbrough to thrive within its natural habitat?	What would it mean for Middlesbrough to respect the health of the whole planet?
Social	What would it mean for the people of Middlesbrough to thrive?	What would it mean for Middlesbrough to respect the wellbeing of people worldwide?

Social Foundation



Arts & Events



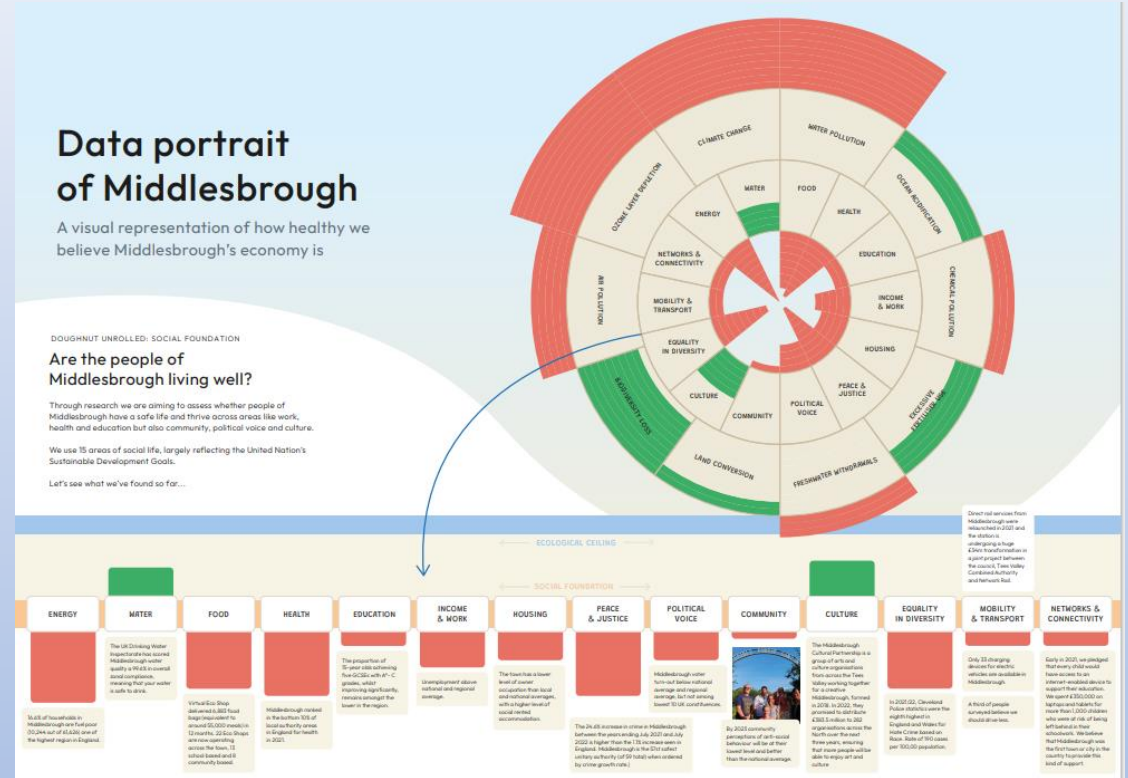


Edible Forest Garden & NHS Allotment





Middlesbrough Data Portrait



AIM

Urgent call to:

- Monitor progress in actual outcomes towards strategy targets
- Learn from past initiatives
- Create new systems for sustained progress



Waste Management





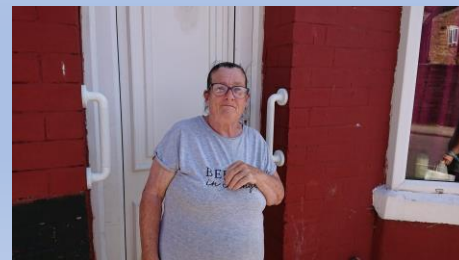
COMMUNITY CONNECT ACTION

Alleyway Project Collaborations

Waste Management Jamboard



With Residents,
Waste Collectors,
Thirteen, Councillors,
Council Officers,
CAM, Fire Service etc.





Waste Management Need for Collective Responsibilities & Accountabilities

Waste Collectors



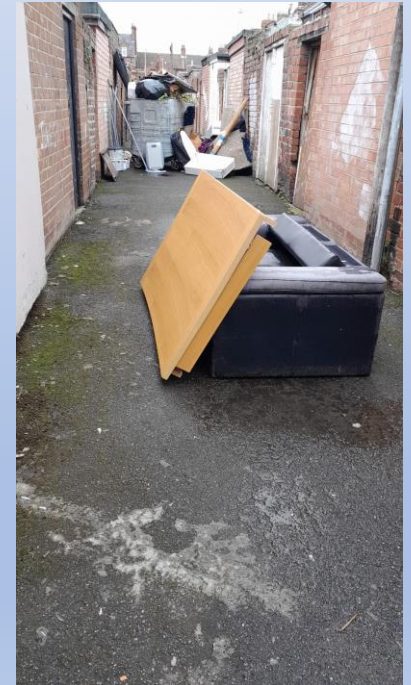
Council



Residents



Non-Residents



Policy makers



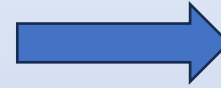
Continuous Improvements Methodology



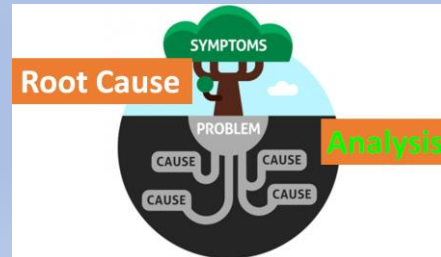
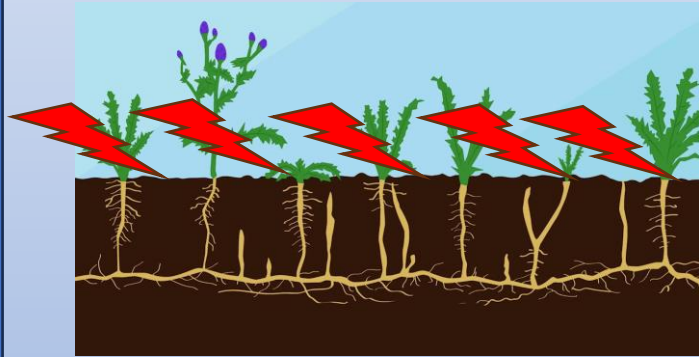
Lessons learnt from the past initiatives in which the same problems keep reoccurring



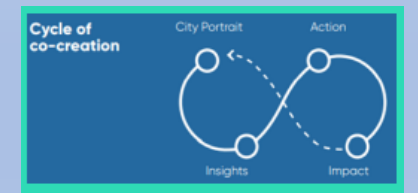
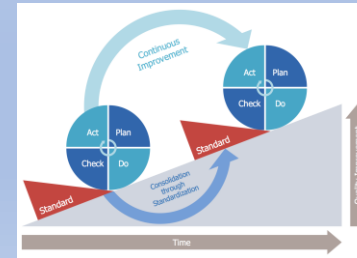
Learn from other towns. How to take out the cause of problem (root), prepare the provision environment (soil) and start enabling sustainable initiatives



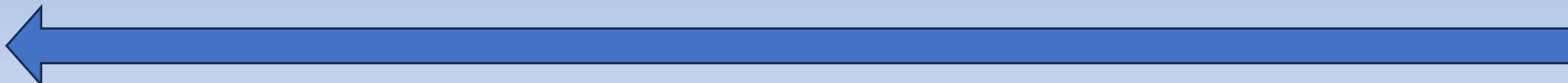
Ensure ALL people and the environment benefit from this and 'Thrive' by collecting actual outcome evidence



	Jan	Feb	Mar	Apr	May	Jun	Jul	Aug	Sep	Oct	Nov	Dec
Job-1	x days											
Sub-job1	x days											
Sub-job2	x days											
Sub-job3	x days											
Job-2	x days											
Sub-job1	x days											
Sub-job2	x days											



Embed and sustain progress. Share good practice. If not, go back



What Is Root Cause Analysis (RCA)?

Root Cause Analysis (RCA) is a useful popular tool that helps determine the basic, underlying cause of a problem through a series of specific steps. A factor is considered a root cause if its removal from the problem-fault-sequence prevents the final undesirable event from recurring.

When Should Root Cause Analysis be Performed?

- When human errors occur during a workflow process
- When performance is below standard
- When equipment failures or adverse events occur during certain work processes

The successful application of the determination of the root cause should ultimately result in the elimination of the problem.

Steps of RCA

Step 1:
Identify
the Problem

Step 2:
Select Team

Step 3:
Collect Data

Step 4:
Identify
Possible Factors

Step 5:
Identify
Root Cause(s)

Step 7:
Monitor and
Assess Results

Step 6:
Define and
Implement an
Action Plan

Management

Process

People

No Data Analysis

Lack of provision

Non-residents
Outsiders

Non-compliance by some residents

No enforcement

Inaccessible rules

Overspill from waste collectors

Alleyway Fly Tipping, Littering in TS1

Poor incentive

Dirty lack of maintenance

No skip to put in

Poor quality & maintenance

Students exempt from Council tax

Barriers
Inaccessible rules

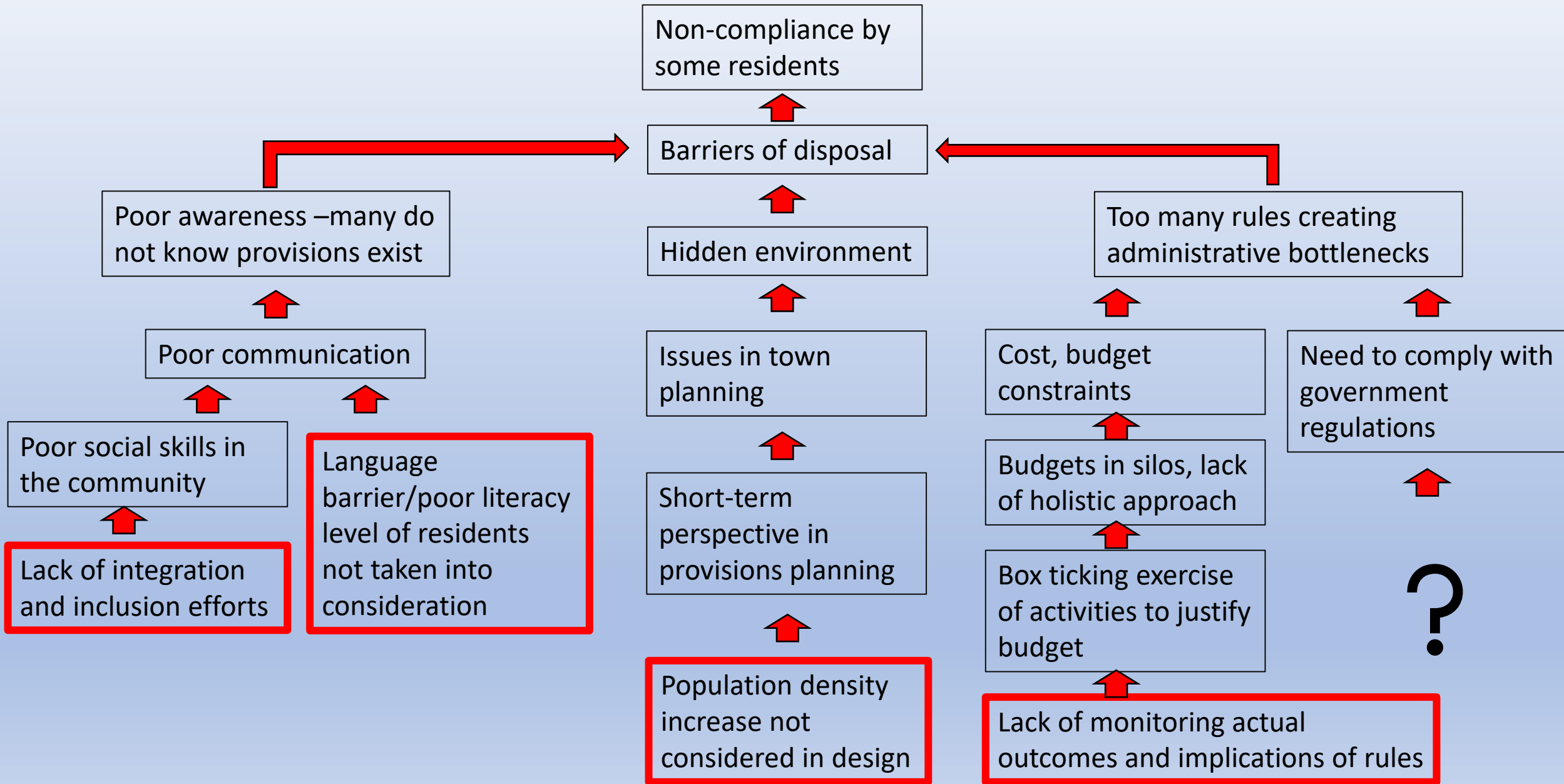
Policy

Environment

Equipment

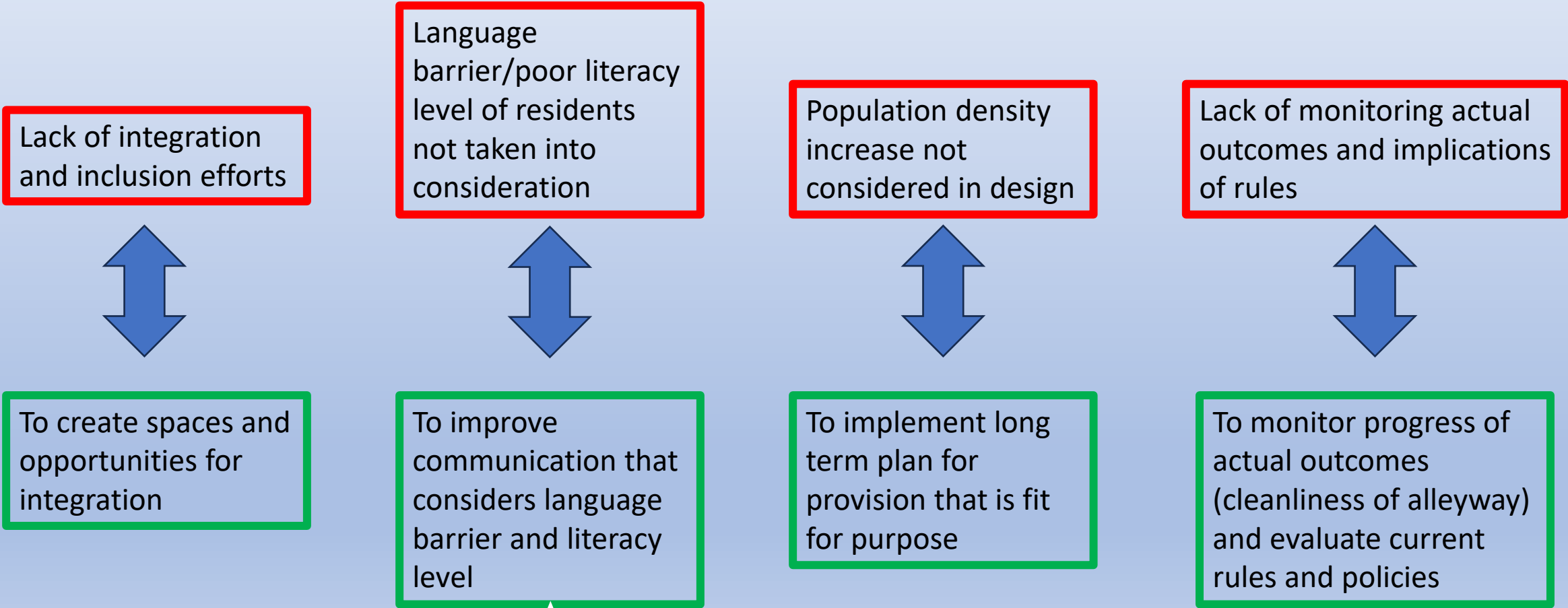


ROOT CAUSE ANALYSIS - Alleyway Fly Tipping, Littering in TS1



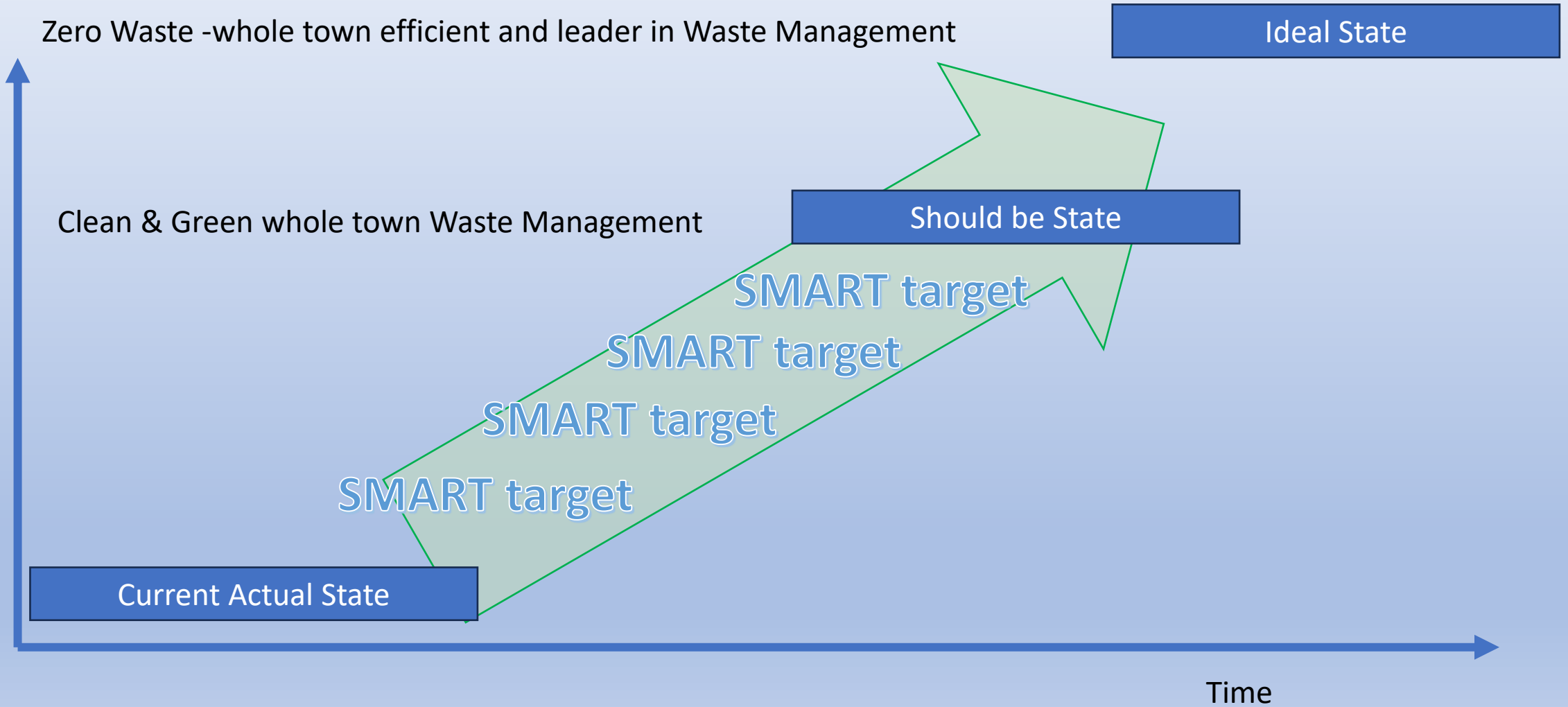


Turn the Root Causes into Solution Objectives





Purpose led Implementation of initiatives Alignment to vision





Workshop for Sustainable Waste Management

To meet the needs of ALL people within the means of the living planet

Zero Waste



Aim: Waste disposal strategy that promotes high environmental standards

Objective: To increase recycling levels of municipal waste across Middlesbrough

Outcome: Continuous collaboration of objective evidence based systems change

Strategy Level work

Lessons learnt from:

Strategy 2018-2023

One Planet Living Strategy

Green Strategy

Strategy 2020-23

Sustainable waste management

Increase recycling levels of municipal waste across Middlesbrough. Alongside this ensure that our waste disposal strategy promotes high environmental standards.

One Planet Living principle - zero waste

How we will do this:

- Rollout public recycling bins in the town centre by 2020.
- Increase recycling rates for domestic recycling from the current level of 33%.
- Promotion of waste reduction and recycling via social media and educational campaigns to raise awareness.
- Ascertain the levels of waste produced by the council across all services to reduce waste and ensure more waste is recycled.
- Introduce fortnightly household waste collection and for food waste.
- Reduce and ultimately eliminate all single use plastics in all council facilities and activities inc public events.



Liam Khan demonstrating the principles of recycling will Cllr McCabe

Evaluate Actual Outcome



Recycling deep dive – Holistic Approach



Collaborative, objective evidence- based analysis
No blame, just learning together



1.To examine the current position regarding waste and recycling collection and disposal in Middlesbrough, including performance data and targets and how these compare locally and nationally

6.To identify best practice and ideas from other local authorities that have good recycling rates.



2.To explore how Middlesbrough can increase its recycling rates, and reduce residual waste, to achieve national targets whilst minimising costs.

Circular Economy



3.To gain an understanding of the legal and policy framework in which the Council must operate, in terms of all types of waste collections and associated enforcement activity



4.To examine the current position in Middlesbrough regarding the collection and disposal of bulky waste (junk jobs) and fly-tipped waste, including performance data and targets and how these compare locally and nationally, and, if appropriate, how this can be improved.



5.To consider how Middlesbrough can prepare for, and comply with, compulsory food waste collections once introduced.